

BCC — MailProtect

E-Mail-Management and Security für IBM Lotus Domino

save secure automate save secure automate save secure automate save secure automate



- Reduce costs of your messaging infrastructure
- Centrally manage digital signature and encryption
- Reduce data volume and storage space
- Shield employees from Spam and viruses
- Meet regulatory requirements (compliance)





All-in-one Secure Messaging Solution

save secure automate save secure automate save secure automate save secure automate

BCC_MailProtect Features

- Signature & Encryption:
 - S/MIME, PGP (GnuPG),
 - Certificate Management,
 - Signature Verification
- Anti-Virus
- Anti-Spam
- Attachment Management (compression, filtering)
- Disclaimer Management
- Central Absence Management
- Policy-based E-Mail Management
- Compliance
- Archiving

Attacks on messaging systems and the costs for defending them have grown steadily over the last years. Any change of this progression is unlikely. The need to meet regulatory requirements (compliance) like archiving, legal liability, and audits causes increased operating costs of the messaging infrastructure. At the same time, e-mail communication need to become more efficient in order to meet the requirements of the modern business environment.

BCC_MailProtect is an all-in-one solution for secure messaging in Lotus Domino environments. The software provides a configurable rule base system and value-add services to protect your messaging infrastructure and enhance the e-mail based communication. With centrally managed corporate e-mail policies BCC_MailProtect automates the e-mail management in your organization and provides an audit-proof documentation.

Encryption Gateway

BCC_MailProtect decrypts incoming e-mails on the server and then forwards them to the internal recipient. Users can simply opt to encrypt outgoing e-mails. Additionally, the central condition rules can be set up to control encryption settings such as mandatory encryption if specified content is in the e-mail or the e-mail is addressed to a particular domain.

This encryption process fully supports virus checking and archiving processes.

Certificate Management

This service extracts certificates from incoming e-mails or accesses them via LDAP, which eliminates the need for time-consuming manual exchange of certificates. The required private and public certificates are centrally managed in protected Lotus Notes databases. Existing PKI environments or trust centers can easily be integrated via BCC_MailProtect's request-based certificate management process.

Signature Check

The signature check follows the configurable trust rules to fulfill the legal requirements by checking the complete chain of certificates and using the Certificate Revocation Lists (CRLs). The results of the signature check are inserted in the e-mail with a time stamp.

Anti Virus

This service provides a virus check using multiple scan engines. In addition to the included ClamAV engine, further scan engines by McAfee, TrendMicro, Symantec and Sophos are supported natively. Also any command-line scanners can be used. The scan options are easily configured in the service documents.

Anti Spam

BCC_MailProtect uses the leading anti-spam technology of ISS and word lists to provide effective anti-spam services. Users can review blocked emails in the web-enabled quarantine database. At regular intervals, an integrated reporting service delivers Spam-reports with a list of the blocked mails. Personal and public black and white lists are easily maintained.



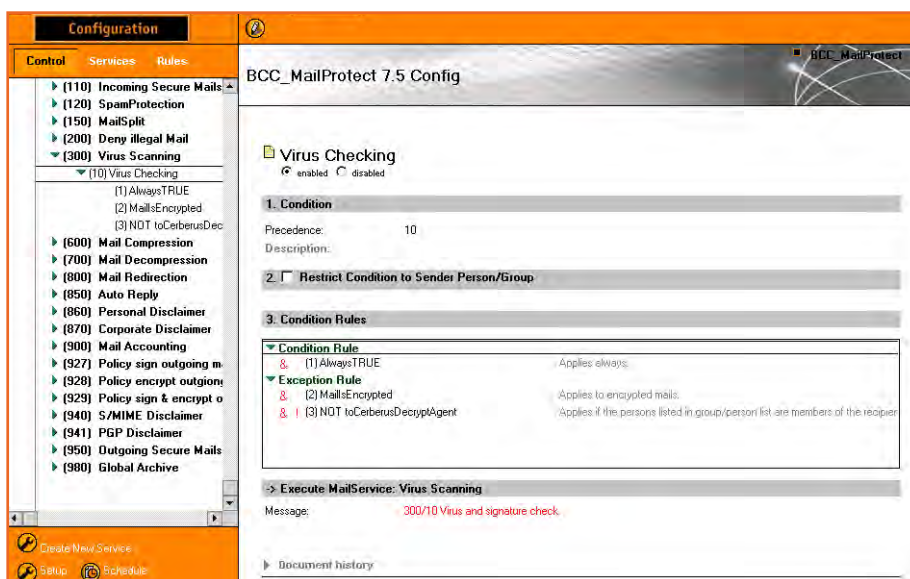
Central E-Mail Management

save secure automate save secure automate save secure automate save secure automate

Attachment Management - Filtering and Compression

This service automatically compresses file attachments and filters out attachments that are not allowed. These actions can be configured with parameters such as file size, file format, or number of recipients. For file format identification file extension as well as the included file signatures can be used.

The automated compression service packs and unpacks using the ZIP format.



Configuration database - easy configuration for reliable protection

Disclaimer Management

A rule based disclaimer management service attaches static or dynamically computed disclaimers to e-mails. This can also include any information from the Domino Directory.

Central Absence Management

This service provides a rule and time based redirection of e-mails to other recipients as well as the automated generating of specific response e-mails like absence information or notice of receipt. Response mails can be configured specifically to the requirements of each department.

Rule and Policy Based Mail Management

The mail management service uses an extensive collection of predefined rules for e-mail management such as internal/external recipients, domains, virus check results and much more. Additionally, individual rules can be created using Lotus @formula language. The rule base also provides certain system information as variables.

Compliance and Archiving

BCC_MailProtect allows you to satisfy a strict compliance audit with automated archiving and categorization of all e-mail traffic. It allows archiving to Lotus Notes databases or delivery of content to third-party-archiving systems like Centera, IBM Tivoli Common Store.

Why BCC_MailProtect?

- Secure, high-performance, complete and cost-efficient
- Integrated solution for Spam & virus prevention and management of e-mails, even applicable to encrypted e-mails
- Seamless integration into Lotus Domino
- Easy configuration and administration
- Cost-efficient anti-virus protection through integrated open source virus scanner ClamAV
- Precise detection of Spam without time-consuming configuration and ongoing manual adjustments
- Centrally provided digital signature and encryption services
- Savings in storage costs due to size limitation and compression of file attachments
- Meeting formal requirements through standardized e-mail signature
- Complying with regulatory requirements through automated archiving of e-mails and central logging of all operations



More solutions for your infrastructure

save secure automate save secure automate save secure automate save secure automate



BCC Unternehmensberatung GmbH

EMEA Headquarters

Frankfurter Strasse 80-82
65760 Eschborn, Germany
Phone: +49 6196 64040-40

BCC North America

Phone +1 407-362-7843

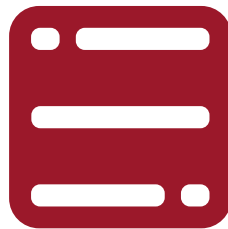
Web: www.bcc.biz

E-Mail: sales@bcc.biz

About BCC

BCC is a leading supplier of IBM Lotus Notes and Domino management tools. Based near Frankfurt, Germany, BCC has been developing software for Lotus Notes and Domino platform and providing project support to customers for more than ten years. BCC's software helps organizations increase system and process security, automate Domino administration, and reduce the total cost of ownership (TCO) for their Notes and Domino infrastructures. More than 3 million users at almost 600 customers trust BCC solutions.

BCC's Portfolio:



SYSTEM

- BCC — AdminTool** · User- and Group Management
- BCC — DBTool** · Database Management
- BCC — DominoProtect** · Server Security



CLIENT

- BCC — Zip** · Attachment Management + ZIP Compression
- BCC — ClientGenie** · Notes Client Management



COMM

- BCC — Charon** · Unified Messaging with Fax, SMS, Voice & more
- BCC — MailProtect** · E-Mail Management, Security & Compliance



IBM. Lotus. software



© 2009 BCC Unternehmensberatung GmbH

- All rights reserved.
- All information contained in this document is subject to change without notice.
- All BCC product names are registered trademarks of BCC.
- Lotus Notes, Lotus Domino and WebSphere are registered trademarks of IBM Corporation.
- Other company and product names may be the trademarks of their respective owners.